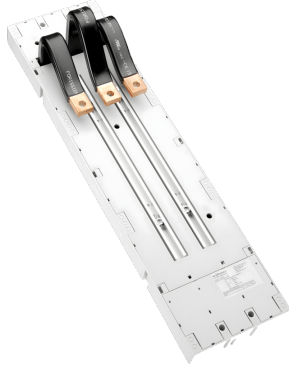


busbar adapter 630 A (32743)



The picture may show a similar product.

Description

Part No.: **32743** 000A

EQUES 185Power

busbar adapter 630 A

universal version up to 630 A, phase distance 43-46 mm

connection at top / bottom, screw connection

for busbars 30, 40, 60, 80, 100, 120 x 10

System

185Power

Advantages of the product

Device can be mounted covering the busbar support (in systems with and without CrossLink® touch-safe protection cover)

Product group 05

Subgroup 48

pack size 1

EAN 4021267327439

ETIM 5.0 EC001531
ETIM 8.0 EC001531
ETIM 10.0 EC001531

Approvals

Standards

IEC 61439-1:2020
UL 508

Approvals

UL



for UL feeder circuits >250V

type number: EQ185-A630-S

UL file: E123577, UL category (for USA): NMTR <https://www.ul.com>

UL file: E123577, UL category (for Canada): NMTR7 <https://www.ul.com>

CCC approval: no certification required

Technical data

Details IEC

Standards

IEC 61439-1:2020

Electrical data IEC

rated current (IEC): 630 A

rated voltage (IEC) AC: 800 V

rated isolation voltage U_i AC: 1000 V

rated surge voltage U_{imp} : 12 kV

rated peak withstand current I_{pk} max.: 63 kA

rated short-time withstand current I_{CW} (1.0 s) max.: 30 kA

the following required reductions have been determined by tests:

with MCCB **ABB Tmax T5, XT5**

with MCCB **Allen-Bradley 140G-K**

with MCCB **Eaton NZM3**

with MCCB **Schneider Electric NSX630**

with MCCB **Schrack MC3**

with MCCB **Siemens 3VA14, 3VM64**

with MCCB **Siemens 3VA23, 3VA24**

with MCCB **Siemens 3VA64**

Power dissipation of the adapter:

at 500A => 58W

at 530A => 65W

at 565A => 73W

at 570A => 80W

Details UL

Standards

UL 508

for UL feeder circuits >250V

Electrical data UL

rated current (UL): 630 A

rated voltage (UL) AC: 1000 V

rated frequency (UL): 50 / 60 Hz

rated voltage (UL) DC: 1000 V

SCCR unprotected max.: 22 kA

3 cycles (without OPD) @ 600 V AC

SCCR: 65 kA with any DIVQ/7 circuit breaker 600 A / 600 V AC

Mechanical data

W x H x D: 150 x 585 x 47

weight: 620.0 kg/100

poles: 3-pole

for busbars: 30, 40, 60, 80, 100, 120 x 10

CT can be integrated in the device: ja

Material properties

halogen-free: Yes

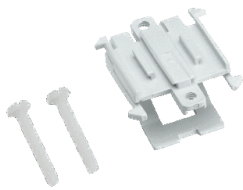
Application notes

ready for current transformer

the short-circuit capacity of the combination of adapter and MCCB depends on the MCCB
for UL feeder circuits >250V

Accessories

accessories for mounting



37900 000A

fixing clip for current transformers / measuring transformers
for mounting at busbars and in adapters 630 A
for busbars 25-30 x 5 and 12-30 x 10

measuring transformers 333mV



37307 000A

measuring transformer 600 A / 333 mV
size CT2
class 0.5s

when used on busbars or in 630 A adapters, article 37900 is additionally required

NEW



37296 000A

measuring transformer 200 A / 333 mV
size CT2
class 0.5

when used on busbars or in 630 A adapters, article 37900 is additionally required

NEW



37304 000A

measuring transformer 250 A / 333 mV
size CT2
class 0.5s

when used on busbars or in 630 A adapters, article 37900 is additionally required

NEW



37289 000A

measuring transformer 200 A / 333 mV
size CT2
class 1

when used on busbars or in 630 A adapters, article 37900 is additionally required

NEW



37298 000A

measuring transformer 400 A / 333 mV

size CT2

class 0.5

when used on busbars or in 630 A adapters, article 37900 is additionally required

NEW



37305 000A

measuring transformer 400 A / 333 mV

size CT2

class 0.5s

when used on busbars or in 630 A adapters, article 37900 is additionally required

NEW



37293 000A

measuring transformer 600 A / 333 mV

size CT2

class 1

when used on busbars or in 630 A adapters, article 37900 is additionally required

NEW



37290 000A

measuring transformer 250 A / 333 mV

size CT2

class 1

when used on busbars or in 630 A adapters, article 37900 is additionally required

NEW



37303 000A

measuring transformer 200 A / 333 mV

size CT2

class 0.5s

when used on busbars or in 630 A adapters, article 37900 is additionally required

on request



37306 000A

measuring transformer 500 A / 333 mV

size CT2

class 0.5s

when used on busbars or in 630 A adapters, article 37900 is additionally required

NEW



37292 000A

measuring transformer 500 A / 333 mV

size CT2

class 1

when used on busbars or in 630 A adapters, article 37900 is additionally required

NEW



37291 000A

measuring transformer 400 A / 333 mV

size CT2

class 1

when used on busbars or in 630 A adapters, article 37900 is additionally required

NEW



37297 000A

measuring transformer 250 A / 333 mV

size CT2

class 0.5

when used on busbars or in 630 A adapters, article 37900 is additionally required

NEW



37300 000A

measuring transformer 600 A / 333 mV

size CT2

class 0.5

when used on busbars or in 630 A adapters, article 37900 is additionally required

NEW

**37299 000A**

measuring transformer 500 A / 333 mV

size CT2

class 0.5

when used on busbars or in 630 A adapters, article 37900 is additionally required

NEW

current transformers class 1

**37212 000A**

current transformer 200 A / 5 A

size CT2

2.5 VA / class 1

when used on busbars or in 630 A adapters, article 37900 is additionally required

**37213 000A**

current transformer 250 A / 5 A

size CT2

2.5 VA / class 1

when used on busbars or in 630 A adapters, article 37900 is additionally required

**37214 000A**

current transformer 400 A / 5 A

size CT2

2.5 VA / class 1

when used on busbars or in 630 A adapters, article 37900 is additionally required

**37215 000A**

current transformer 500 A / 5 A

size CT2

2.5 VA / class 1

when used on busbars or in 630 A adapters, article 37900 is additionally required



37216 000A

current transformer 600 A / 5 A

size CT2

2.5 VA / class 1

when used on busbars or in 630 A adapters, article 37900 is additionally required

current transformers class 0.5



37219 000A

current transformer 200 A / 5 A

size CT2

1 VA / class 0.5

when used on busbars or in 630 A adapters, article 37900 is additionally required



37220 000A

current transformer 250 A / 5 A

size CT2

2.5 VA / class 0.5

when used on busbars or in 630 A adapters, article 37900 is additionally required



37221 000A

current transformer 400 A / 5 A

size CT2

2.5 VA / class 0.5

when used on busbars or in 630 A adapters, article 37900 is additionally required



37222 000A

current transformer 500 A / 5 A

size CT2

2.5 VA / class 0.5

when used on busbars or in 630 A adapters, article 37900 is additionally required



37223 000A

current transformer 600 A / 5 A

size CT2

2.5 VA / class 0.5

when used on busbars or in 630 A adapters, article 37900 is additionally required

required



37232 000A

current transformer 200 A / 5 A, with decl. of conformity
size CT2

1 VA / class 0.5

when used on busbars or in 630 A adapters, article 37900 is additionally
required



37233 000A

current transformer 250 A / 5 A, with decl. of conformity
size CT2

2.5 VA / class 0.5

when used on busbars or in 630 A adapters, article 37900 is additionally
required



37234 000A

current transformer 400 A / 5 A, with decl. of conformity
size CT2

2.5 VA / class 0.5

when used on busbars or in 630 A adapters, article 37900 is additionally
required



37235 000A

current transformer 500 A / 5 A, with decl. of conformity
size CT2

2.5 VA / class 0.5

when used on busbars or in 630 A adapters, article 37900 is additionally
required

current transformers class 0.5s



37236 000A

current transformer 250 A / 5 A, with decl. of conformity
size CT2

1 VA / class 0.5s

when used on busbars or in 630 A adapters, article 37900 is additionally
required

stock sale



37237 000A

current transformer 400 A / 5 A, with decl. of conformity
size CT2

2.5 VA / class 0.5s

when used on busbars or in 630 A adapters, article 37900 is additionally
required



37238 000A

current transformer 500 A / 5 A, with decl. of conformity
size CT2

2.5 VA / class 0.5s

when used on busbars or in 630 A adapters, article 37900 is additionally
required

<https://pim.woehner.de/EN/INT/1000172810>